

Wallace Cove

WALLACE COVE, NEW BRUNSWICK

Wallace Cove Wharf Facility Wharf and Lift Bridge



COMPLETION DATE

November 2006

VALUE OF CONTRACT

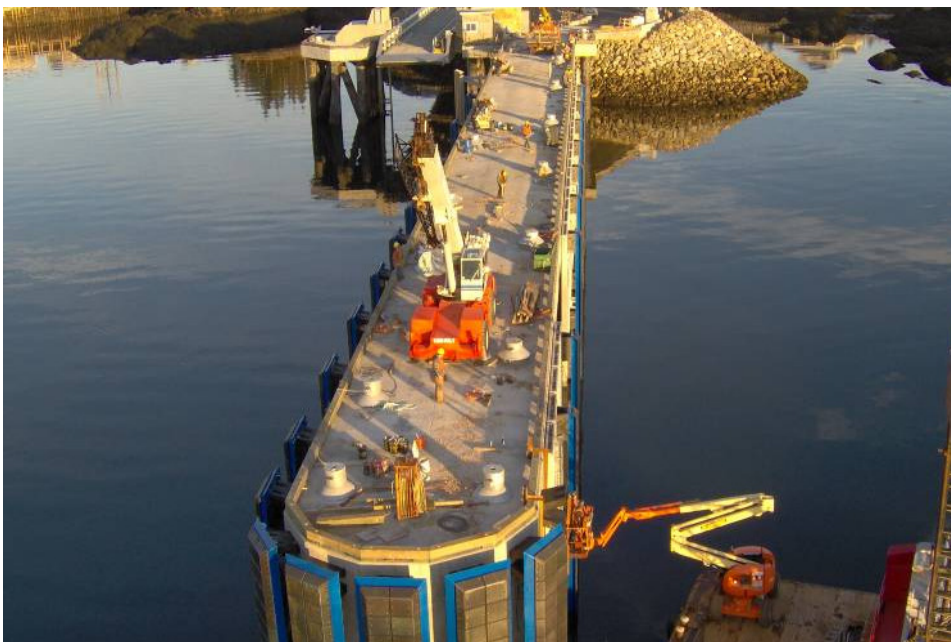
\$13,600,000

OWNER

Department of Transportation,
New Brunswick

CONSULTANT

Eastern Designers
Keith Thompson
Fredericton, NB



BEAVER MARINE
LIMITED

Project Description

DESCRIPTION

New ferry terminal consisting of a opipe pile supported wharf and left bridge ramp. This structure is the mainland terminal for the Grand Manan Ferry.

EQUIPMENT

"Beaver Kay" Spud Barge
"William Dilly" Spud Barge
Linkbelt 518 c/w vertical travel lead
Northwest 190
36" dia. Down the Hole Hammer
Liebherr HS855 HD
Vibro 816 Vibratory Hammer

INSTALLATION METHOD

The wharf structure is founded on 36" and 42" pipe plies complete with a 36" 4m socket into the bedrock. Concrete pile caps, precast wavebreak, precast approach bridges and abutments complete the wharf structure. The piles were driven with Vibro 816 and drilled with 36" diameter Tricone bit. The lift bridge was erected using the "Beaver Kay" and Linkbelt 518.